

Concrete Repair



Conpatch V/O

Conpatch V/O is a single component, cement based, polymer modified patching and repair mortar for vertical and overhead applications. Due to excellent durability and strength, the mortar also can be used for horizontal and any other structural applications.

Conpatch V/O's unique rapid setting, non-shrink formulation offers excellent durability and ease of application without the use of forms.

Available in 50 lb. bags; yield of .41 cu. ft./50 lb.

Pave Patch 3000

Pave Patch 3000 is a specially formulated patching material for concrete pavement repairs. It sets fast, develops high early strength and expands slightly. Useable in temperatures down to 32°F. Resistant to freeze thaw cycles, salt and heavy traffic.

Available in 50 lb. bags; yield of .41 cu. ft./50 lb.

Pave Patch Concentrate DBM

Pave Patch Concentrate DBM is a rapid setting, high early strength repair material that when mixed with sand, stone and water, produces a permanent repair for concrete.

Typical mix proportions and yield for 1 cu. yd.:

DBM cement	750 lbs.
Sand	1125 lbs.
3/8" Stone	1875 lbs.
Water	26 gal.

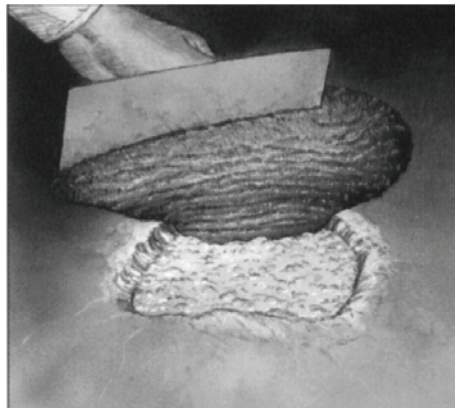
Available in 50 lb. bags or 3000 lb. super sacks.

Aurora Top

Aurora Top is a pourable, semi self-leveling, "Neutral Light" colored cementitious topping and repair mortar for smoothing and leveling concrete.

Aurora Top is ideal for patching or topping concrete surfaces, leaving a durable repair that will cure to a natural "light" appearance.

Available in 50 lb. bags; yield of .41 cu. ft./50 lb.



Special Patch

Special Patch is a polymer-modified, cementitious, two component repair mortar for use in thin and thick section concrete patching and overlays.

Special Patch provides excellent freeze-thaw resistance, superior adhesion and resistance against the penetration of deicing salts and other contaminants. Ideal for repairing interior warehouse slabs or exterior concrete pavements.

Unit contains 50 lb. powder and 1 gal. bonder; yield of .41 cu. ft./unit.

Conflow

Conflow is a self-leveling and self-finishing polymer modified cementitious underlayment. Use Conflow as an underlayment for interior applications only. Use of Prime Flow to seal surfaces prior to applying Conflow is critical.

Available in 45 lb. bags; coverage of 22 sq. ft./45 lb. @ 1/4".

Rub Crete

Rub Crete is a one-part, polymer modified material specially formulated for rubbing, smoothing, resurfacing, repairing and restoring concrete surfaces. Rub Crete is designed with a chemical additive to ensure superior bonding characteristics.

Available in 40 lb. bags; yield of .42 cu. ft./40 lb.

D
i
v
i
s
i
o
n
3



SPEED CRETE® RED LINE Fast-Setting Patching Material

Speed Crete Red Line is a fast-setting concrete and masonry patching compound that requires only potable water for mixing. It achieves initial set in 8 to 10 minutes and final set within 20 minutes. After initial set, it may be shaved to conform to the contours of the surrounding surface. It is used on vertical, overhead and horizontal surfaces without forming.

Available in 50-lb. bags; yield of .5 cu. ft. / 50 lb.

TAMMSPATCH Two-Component Concrete Repair Mortar

Tammspatch is a user-friendly, two-component repair mortar packaged in convenient preproportioned kit. It has a long working time and is a high-performance, general purpose concrete repair product useful for applications from feather-edge to one inch.

Kit contains 50 lbs. of powder and 1 gal. of bonder;
yield of .45 cu. ft. / 50 lb. kit

FLOORSTONE Cementitious Leveling Underlayment

Floorstone products are used to fill and level low areas and to patch floor surfaces before traffic-bearing floor coverings are installed.

Floorstone Supreme is used for skim coats and thin fills up to 1/4" thick, and is mixed with Lastex liquid polymer binder.

Floorstone N.I.F. is mixed with water and used for fills beginning at 1/4" up to maximum 2" in thickness.

Available in 50-lb. bags; yield of .5 cu. ft. / 50 lb.

SPEED CRETE® 2028 Rapid-Setting Mortar

Speed Crete 2028 is a cement-based, ready to use patching and repair mortar which achieves rapid strength gain – 2600 PSI within 1 hour at 75°F. Used for patching of horizontal concrete such as highways, bridge decks, parking decks and runways.

Available in 50-lb. bags; yield of .42 cu. ft. / 50 lb.
(neat)



TAMMS THIN PATCH Feather-Edge to 1 Inch Polymer Modified Patching Mortar

Tamms Thin Patch is a one-component, polymer modified cement-based product formulated for patching and repairing concrete and masonry from feather-edge to one inch thickness.

Available in 50-lb. bags; yield of .4 cu. ft. / 50 lb.

AKKRO®-7T Liquid Bonding Admixture

Akkro-7T is a non-reemulsifiable high solids, liquid bonding admixture for improving the physical properties, cure and adhesion of Portland cement or gypsum mixes. Typical mix is 1 part Akkro-7T with 3 parts water.

Available in 1-gal. and 5-gal. pails

SPEED PLUG Quick-Setting Hydraulic Cement

Speed Plug is a quick-setting hydraulic cement compound used to instantly stop running water or seepage leaks in masonry or concrete. It requires only potable water for mixing and achieves initial set in 1 to 3 minutes.

Available in 50-lb. pails; yield of .5 cu. ft. / 50 lb.

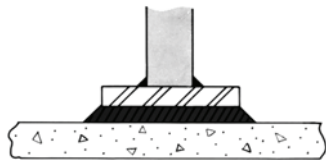
Concrete Repair



What is Rapid Set® Cement?

Rapid Set® Cement is a hydraulic cement. It is similar to Portland Cement in manufacture and use. The chemical constituents of Rapid Set® Cement are the same as used in ASTM Type K Shrinkage Compensated Cement. However, Rapid Set® Cement Concrete does not expand. Rapid Set® Cement Concrete and Grouts set up and rapidly gain strength at low temperatures (to 22°F).

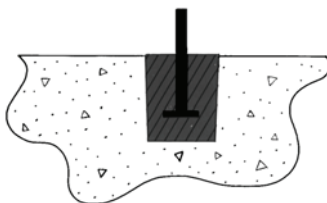
		Compressive Strength PSI	Applicable Standards
<p>Rapid Set® Cement: A pure hydraulic cement designed to replace Portland Cement in your high performance grout, mortar and concrete mixtures. Just add water and your choice of aggregates. Packaged in 88-lb. (40kg) bags; also available in bulk.</p>	<ul style="list-style-type: none"> Formulate grout, mortar and concrete mixtures Ideal for Precasters Ready Mix applications: <ul style="list-style-type: none"> Fast-track Pavement Flowable Fill, Latex Overlays 	2100 @ 1 Hr. 3700 @ 3 Hr. 5400 @ 24 Hr. 7400 @ 28 Days	ASTM C-150 ASTM C-1157 ASTM C-597
<p>Rapid Set® Cement All™ Non-Shrink Multi-Purpose Grout: a mixture of Rapid Set® Cement and quality sand. Ideal for all types of concrete projects. Packaged in 55-lb. (25kg) bags and 10-lb. (4.5kg) and 25-lb. (11kg) boxes.</p>	<ul style="list-style-type: none"> Concrete Repair Anchoring Grouting Floor Underlayment Concrete Patching Underwater applications 	2200 @ 1 Hr. 4800 @ 3 Hr. 7000 @ 24 Hr. 8500 @ 28 Days	ASTM C-1107 ASTM C-928 State & Local Approvals LA RR 24654 CRD C 621
<p>Rapid Set® D.O.T. Repair Mix: A blend of Rapid Set® Cement, specially graded sand, and performance additives. Produces the highest strength Rapid Set® material. May be extended 100% with 3/8" aggregate. Packaged in 55-lb. (25kg) bags.</p>	<ul style="list-style-type: none"> High strength concrete repair Restoring bridges & highways Parking deck & slab repair Doweling & anchoring Concrete overlays 	2300 @ 1 Hr. 5100 @ 3 Hr. 8200 @ 24 Hr. 10,500 @ 28 Days	ASTM C-1107 ASTM C-928 State & Local Approvals
<p>Rapid Set® 3/8" Concrete Mix: A mixture of Rapid Set® Cement, graded sand, and coarse aggregate. May be applied in thicknesses from 1 inch to 2 feet. Packaged in 60-lb. (27kg) bags. <i>A premium industrial-grade construction product.</i></p>	<ul style="list-style-type: none"> Build and repair concrete Set posts & pour footings Repair pavement & walkways Construct steps & ramps Structural repairs 	2000 @ 1 Hr. 3600 @ 3 Hr. 5500 @ 24 Hr. 7700 @ 28 Days	ASTM C-928 ASTM C-387



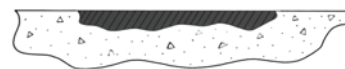
Precision Grout Under Column, Machine Base Plates & Precast Columns

Product Yield

Product	Size	Yield
Rapid Set Cement	88 lb.	1 cu. ft.
Rapid Set Cement All	55 lb.	.5 cu. ft.
Rapid Set D.O.T. Repair Mix	55 lb.	.5 cu. ft.
Rapid Set Concrete Mix	60 lb.	.5 cu. ft.



Grouting in Anchor Bolts, Rebar and Railing



Floor & Pavement Repairs

Division 3

Concrete Repair



SikaTop® 122 PLUS

Description: SikaTop 122 PLUS is a two-component, polymer-modified, Portland cement, fast-setting, trowel-grade mortar. It is a high performance repair mortar for horizontal and vertical surfaces and offers the additional benefit of FerroGard 901, a penetrating corrosion inhibitor.

Where to Use:

- On grade, above, and below grade on concrete and mortar.
- On horizontal surfaces.
- As a structural repair material for parking structures, industrial plants, walkways, bridges, tunnels, dams and ramps.
- To level concrete surfaces.
- As an overlay system for topping/resurfacing concrete.
- Overlay in cathodic protection systems.

Yield: 0.51 cu. ft./unit mortar; 0.75 cu. ft./unit concrete (SikaTop 122 + 42 lbs. 3/8 pea gravel)

Packaging: **Component 'A'** - 1 gal. plastic jug; 4/carton. **Component 'B'** - 61.5 lb. multi-wall bag.

SikaTop® 123 PLUS

Description: SikaTop 123 PLUS is a two-component, polymer-modified, Portland cement, fast-setting, non-sag mortar. It is a high performance repair mortar for vertical and overhead surfaces, and offers the additional benefit of FerroGard 901, a penetrating corrosion inhibitor.

Where to Use:

- On grade, above and below grade on concrete and mortar.
- On vertical and overhead surfaces.
- As a structural repair material for parking structures, industrial plants, water/waste water treatment facilities, roads, walkways, bridges, tunnels, dams, ramps, etc.
- Approved for repairs over cathodic protection systems.

Yield: 0.39 cu. ft./unit.

Packaging: **Component 'A'** - 1 gal. plastic jug; 4/carton. **Component 'B'** - 44 lb. multi-wall bag.

Sika MonoTop® 611

Description: Sika MonoTop 611 is a one-component, silica fume-enhanced, polymer-modified, portland cement mortar.

Where to Use:

- On grade, above and below grade on concrete and mortar.
- On horizontal, vertical and overhead surfaces.
- As a structural repair material for parking facilities, industrial plants, walkways, bridges, tunnels and dams.
- Free-flowing repair mortar for hard-to-reach areas.
- Filler for voids and cavities.
- Leveling mortar.

Yield: Approximately 0.42 cu. ft./unit. Approximately 0.67 cu. ft./unit (50 lbs. of MT 611+42 lbs. 3/8" pea gravel)

Packaging: 50-lb. multi-wall bag.

Sika MonoTop 615

Description: Sika MonoTop 615 is a one-component, polymer-modified, silica fume enhanced, cementitious, non-sag mortar. It is a multi-purpose mortar which can be applied by trowel or low pressure wet spray.

Where to Use:

- On buildings, facades, and balconies.
- On grade, above and below grade on concrete and mortar.
- On vertical, overhead and horizontal surfaces.
- As a general purpose repair mortar for use on concrete structures in a mild or moderate service environment.

Yield: 0.55 cu. ft./bag.

Packaging: 50 lb. multi-wall bag.

Concrete Repair



Sikacrete® 211

Description: Sikacrete 211 is a one-component, Portland cement concrete containing factory blended coarse aggregate.

Where to Use:

- Full depth repairs.
- On grade, above and below grade on concrete.
- On horizontal, vertical and overhead surfaces.
- As a structural repair material for parking facilities, industrial plants, walkways, bridges, tunnels, dams and balconies.
- Filler for voids and cavities.

Yield: Approximately 0.65 cu. ft./unit.

Packaging: 80 lb. multi-wall bag.

SikaRepair® 222

Description: SikaRepair 222 is a one-component, early strength gaining, cementitious patching material for horizontal repair of concrete.

Where to Use:

- On grade, above and below grade on concrete and mortar.
- As a repair material for spalled horizontal concrete surfaces, walkways, ramps, steps, etc.

Yield: Approximately 0.42 cu. ft. Approximately 0.62 cu. ft. (222+32 lbs. of 3/8" pea gravel).

Packaging: 50 lb. multi-wall bag. SikaLatex R - 1 gal. plastic jug; 4/carton, 5 gal. pails.

SikaRepair® 223

Description: SikaRepair 223 is a one-component, early strength gaining, cementitious patching material for vertical and overhead repair of concrete.

Where to Use:

- On grade, above and below grade on concrete and mortar.
- As a repair material for vertical and overhead concrete surfaces.

Yield: Approximately 0.41 cu. ft.

Packaging: SikaRepair 223 - 50 lb. multi-wall bag. SikaLatex R - 1 gal. plastic jug; 4/carton, 5 gal. pails.

SikaRepair® 224

Description: SikaRepair 224 is a one-component, pre-packaged, ready-to-use, cementitious, silica fume, fiber reinforced, high strength shrinkage-compensated mortar. Formulated for application by trowel or low pressure spray. It is designed especially for repair of overhead and vertical surfaces.

Where to Use: A high performance repair mortar for wet spray application. Suitable for new construction, repairs and maintenance work. Typical applications include:

- On grade, above and below grade on concrete and mortar.
- On vertical and overhead surfaces
- Structural repair material for parking structures, industrial plants, walkways, bridges, tunnels, ramps, dams, etc.
- Potable water tank. (NSF approved in Marion, OH and Santa Fe Springs, CA).

Yield: Yield in service will vary. Average yield is approximately 0.40 cu. ft./bag. Estimating should be based on prior experience or actual field evaluation.

Packaging: 50 lb. multi-wall bag.

Concrete Repair



SikaQuick® 1000

Description: SikaQuick 1000 is a one-component, rapid-hardening, early strength gaining, cementitious patching material for concrete.

Where to Use:

- On grade, above and below grade on concrete.
- Highway overlays and repairs.
- Structural repair material for concrete roadways, parking structures, bridges, dams and ramps.
- Full depth patching repairs.
- Economical patching material for horizontal repairs of concrete and mortar.

Coverage: Approximately 0.43 cu. ft. When extended with 25 lbs. of 3/8" gravel, yield is approximately 0.60 cu. ft.

Packaging: 50 lb. multi-wall bag.

SikaQuick® 2500

Description: SikaQuick 2500 is a one-component, very rapid hardening, early strength gaining, cementitious patching material for concrete.

Where to Use:

- On grade, above and below grade on concrete.
- Highway overlays and repairs.
- Structural repair material for concrete roadways, parking structures, bridges, dams and ramps.
- Full depth patching repairs.
- Economical patching material for horizontal repairs of concrete and mortar.

Coverage: Approximately 0.43 cu. ft. When extended with 25-30 lbs. of 3/8" gravel, yield is approximately 0.60-6.63 cu. ft.

Packaging: 50 lb. multi-wall bag.

SikaSet® Roadway Patch

Description: SikaSet Roadway Patch is a one-component, very rapid hardening, early strength gaining, cementitious patching material for concrete.

Where to Use:

- On grade, above and below grade on concrete.
- Structural repair material for pot holes in concrete roadways, parking structures, bridges, dams and ramps.
- Economical patching material for horizontal repairs of concrete and mortar.

Note: SikaSet Roadway Patch contains High Alumina Cement (HAC).

Coverage: Approximately 0.45 cu. ft. When extended with 42 lbs. of 3/8" gravel, yield is approximately 0.70 cu. ft.

Packaging: 60 lb. multi-wall bag.

SikaSet® Roadway Patch 2000

Description: SikaSet Roadway Patch 2000 is a one-component, very rapid hardening, early strength gaining, cementitious patching material for concrete.

Where to Use:

- Highway overlays and repairs.
- Structural repair material for concrete roadways, parking structures, bridges, dams and ramps.
- Full depth patching repairs.
- Economical patching material for horizontal repairs of concrete and mortar.

Coverage: Approximately 0.43 cu. ft. When extended with 25 lbs. of 3/8" gravel, yield is approximately 0.60 cu. ft.

Packaging: 50 lb. multi-wall bag.

Concrete Repair



Structural Strengthening

Fiber reinforced polymers (FRP) are a proven technology for upgrading and strengthening concrete, masonry, timber and steel structures. These advanced composite materials have exceptionally high strengths, yet are very lightweight and easy to work with. They are used for increasing the capacity of existing buildings and bridges, seismically upgrading structures, correcting design or construction errors, and allowing modifications or changes in use. In addition, the FRP materials offer the following advantages:

- Economy and durability
- Ease of application
- Extremely high tensile strength
- Outstanding fatigue behavior
- Absolute corrosion resistance
- Ability to upgrade structure while in use
- Upgrades possible even with limited access



D
i
v
i
s
i
o
n
3

SikaWrap Hex® 100G

Description: SikaWrap Hex 100G is a unidirectional E-glass fiber fabric. Material is field laminated using Sikadur 300, Sidadur Hex 300 or Sidadur Hex 306 epoxy to form a glass fiber reinforced polymer (GFRP) used to strengthen structural elements.

Packaging: **Rolls:** 50 in. x 30 ft.; 50 in. x 150 ft. **Kits:** Pre-measured kits containing 50 in. x 30 ft. (125 sq. ft.) roll of fabric and 4 gallons of Sidadur Hex 300/306 epoxy.

SikaWrap Hex® 103C

Description: SikaWrap Hex 103C is a high-strength, unidirectional carbon fiber fabric. Material is field laminated using Sikadur 300, Sikadur Hex 300 or Sidadur Hex 306 epoxy to form a carbon fiber reinforced polymer (CFRP) used to strengthen structural elements.

Packaging: **Rolls:** 25 in. x 50 ft.; 25 in. x 300 ft. **Kits:** Pre-measured kits containing 25 in. x 50 ft. (104 sq. ft.) roll of fabric and 4 gallons of Sidadur Hex 300/306 epoxy.

SikaWrap® Hex 300/306

Description: Sikadur Hex 300 and Sikadur Hex 306 are two-component, 100% solids, moisture-tolerant, high-strength, high-modulus epoxies. Sikadur Hex 300/306 is approved for use by ICBO/ICC (ER 5558).

Coverage: As a sealer: 100 sq. ft./gal.
As an impregnating resin: 60 sq. ft./gal.

Packaging: 4 gallon units.